

## W1 系列三相电子式多功能电能表

### W1 Series Multi-function Electric Energy Meter

#### 一、概述 Introduction

##### 1.1 用途和适用范围 Application & range

W1 系列三相电子式多功能电能表系列产品博采国际上众家之长，结合本公司在我国多功能电能表行业多年的设计开发及大量的现场运行经验，采用现代先进微电子技术、计算机技术、电测量技术及高精度计量芯片，数据通信技术以及先进的制造工艺研制而成，是本公司符合国家电网公司 1 级三相智能电能表技术规范的新一代电能计量装置。我们对该型号表进行了大量的可靠性冗余设计。各项技术指标符合《GB/T 17215.323—2008》、《GB/T 17215.321—2008》、《JJG 596—2012》等国家标准以及行业标准。



W1 Series 3 phase Multi-function electric energy meter products are the new Multi-function intelligent energy meters which based on our many years expertise in power monitors of intelligent design and development and a large number of operating experience. It has the advantage with High accuracy, good stability, reasonable layout, advanced technology, practical, strong function, easy to operate and other characteristics. It can be accurately and quickly to measure all kinds of electrical parameters. Various technical standard comply with 《GB/T 17215.323—2008》、《GB/T 17215.321—2008》、《JJG 596—2012》 and other national standards and industry standards.

##### 1.2 该电能表具有如下主要功能 Main functions:

- ✧ 计量各回路正反向有功电能、正反向无功电能;

Measuring each loop forward/reverse, active/reactive power energy, and four quadrants energy;

- ✧ 电压、频率和各回路各种电参数瞬时的测量（电流/有功功率/无功功率/功率因数等）;

Measuring voltage, frequency and instantaneous values of each electric parameters in each loop(current/voltage/active power/reactive power/power factor etc);

- ✧ LCD 显示，自动轮显和按键显示;

The LCD display, recycle display and Key display;

- ✧ 对电量、参变量均进行带 CRC 校验的多重备份;

Multiple backup with CRC for power, parameters;

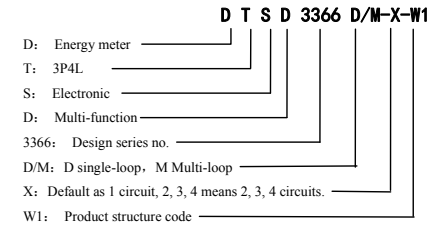
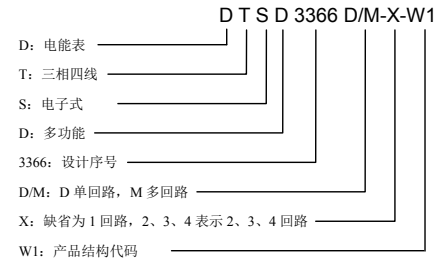
- ✧ 参数可设置及电能清零功能;

Parameters can be set and power reset function;

- ✧ 具有 RS485 接口，符合 Modbus-RTU 通信规约。

With RS485 interface,comply with Modbus-RTU.

#### 二、型号规格描述 Definition for model & specification



#### 三、主要技术参数 Main technical index (以下参数均以铭牌标注为准 The following parameters are subject to the nameplate)

准确度等级 Accuracy: 有功 active power class 1, 无功 reactive power class 2

参比电压 Rated voltage: 3×220V/380V

功率消耗 Power consumption: 每相电压回路 Each voltage circuit: ≤1.5W、2VA;

电流测量范围 Measuring range of current: 20(100)A 配 SCT40L-5k-100 互感器 20(100)A match SCT40L-5k-100  
50(200)A 配 SCT40L-5k-200 互感器 50(200)A match SCT40L-5k-200  
50(250)A 配 SCT40L-5k-250 互感器 50(250)A match SCT40L-5k-250  
100(300)A 配 SCT40L-5k-300 互感器 100(300)A match SCT40L-5k-300  
100(400)A 配 SCT40L-5k-400 互感器 100(400)A match SCT40L-5k-400

##### 可按用户要求定制 Customized

参比频率 Rated frequency: 50Hz

PT、CT: 变比可通过现场按键或后台软件设置 The ratio of each loop can be set by the button on the meter or the daemon system.

辅助电源 Power supply (范围内可选 The scope of the optional): ①DC20~60V; ②AC85~265V 或 DC85~330V

参比温度 Reference temperature: 23℃±2℃; 参比湿度 Reference humidity: 40%~60%RH

工作温度 Working temperature: -10℃~50℃; 运输及储存温度 Temperature for transport & storage: -40℃~70℃

相对湿度 Relative humidity: ≤85%RH

海拔 Altitude: 低于 Less than 4000m

起动电流 Start-up current: 电流为 0.004Ib Current is 0.004Ib

潜动 Shunt running: 电压回路加额定电压的 115%，电流线路无电流，仪表测试输出不产生多于一个脉冲

When the voltage circuit is 115% of the rated and no current, the meter should be not pulse output

脉冲常数 Pulse constants: 请参见产品标牌 Refer to the product's label

外形尺寸 Dimension: 76.5±0.5mm×72±0.5mm×63.5±0.5mm (L×W×T); 主机重量 Weight: 约 About 0.2kg

#### 四、通讯接口 Communication port

本仪表配置有一个 RS485 通讯接口。通讯波特率为 1200bps、2400bps、4800bps、9600bps、19200bps 可设。通过接口，可与 PC 机完成编程参数设置和抄读数据。This meter is with one RS485 communication port. The baud rate is 1200bps, 2400bps, 4800bps, 9600bps and 19200bps(settable). It can finish the setting of programmable parameters and reading data by communication port.

出厂默认波特率为 2400bps。通讯协议符合 Modbus-RTU。The default baud rate is 2400bps. This communication protocol complies with Modbus-RTU.

默认第一回路地址为 01，可使用单地址或多地址通讯读数据。The first loop address is 01, single address or multi-address communication data can be used.

## 五、显示操作 Display operating

显示数据向上翻页或数值加 1。Display data page up or incremented by 1.

显示数据向下翻页或光标左移。Display data page down or cursor left

进入编程页面，密码 3366。Enter into the programming page, password is 3366

按向“▲”或“▼”键可显示电压、频率、电流、功率、功率因数、电能等参数，按“SET”键进入编程页面。

Press ▲“or”▼” to display voltage, frequency, current, power, power factor, energy etc., press “SET” to enter the programming page.

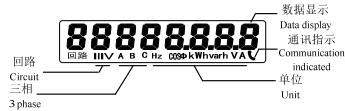


图 1 LCD 显示界面参考图

Picture 1 Reference diagram for LCD display



图 2 第 1 回路 B 相电流

Picture 2 the 1<sup>st</sup> circuit phase B current

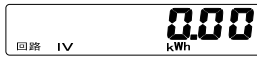
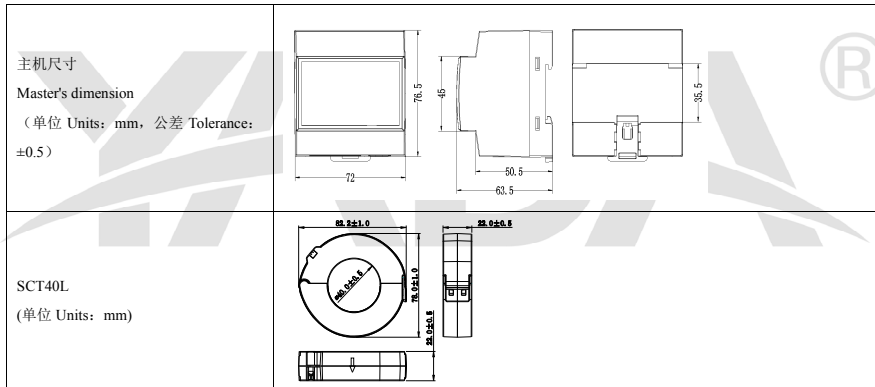


图 3 第 4 回路有功电能

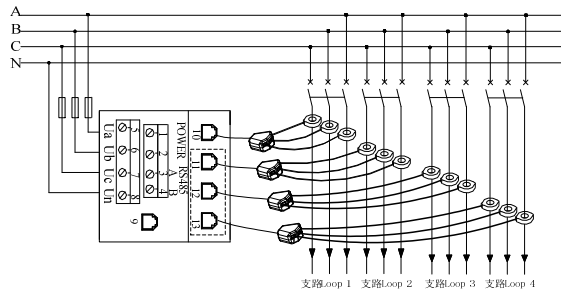
Picture 3 the 4<sup>th</sup> circuit active power

## 六、外形尺寸及接线图 Dimension & connection diagram

### 6.1 外形尺寸 Dimension



### 6.2 接线图 Connection diagram (对应测量回路数与实际购买的产品为准 The corresponding measuring circuit of the actual purchase of products shall prevail)



注意：每相电压电流必须相对应，互感器箭头方向要与负载方向一致。

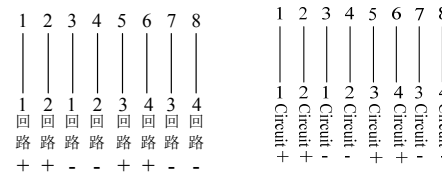
Note: Each phase voltage and current should be corresponding to each other, and the direction of arrow of transformer.

## 接线端子定义 Connection terminal definition

1、2	工作电源 Power supply
3、4	RS485
5	A 相电压 Phase A voltage
6	B 相电压 Phase B voltage
7	C 相电压 Phase C voltage
8	N 零线 Neutral
9	脉冲输出通道 Pulse output interface
10、11、12、13	电流互感器接口 CT port (1~4 回路可选 The optional of 1~4 loop)

### 脉冲输出通道接线 Pulse output channel connection

脉冲接口 8 芯线由左往右排序 the order of pulse interface 8 core lines is from left to right



## 七、储运注意事项 Transport storage

- 产品在运输与拆封时不应受剧烈冲击，并根据国家标准 GB/T13384-2008《机电产品包装通用技术条件》的规定运输贮存。The products should not be subject to server impact during transportation or Taking down the seal, and should in accordance with GB/T13384-2008"General Instrument packaging technology," to transport and store.
- 本产品属电子器件，故搬运、取放时应尽量避免重物撞击和磕碰。This product belongs to the electronic device, should be avoided heavy impact and collision.
- 保存环境温度应为-40℃~70℃，相对湿度不超过 85%且在空气中不含腐蚀性的有害物质。The ambient temperature should be -40℃~70℃ for storage , relative humidity no more than 85%, and the air should not contain harmful substances which will cause corrosion.
- 电表应在原包装的条件下放在仓库保存，叠放高度不超过 5 箱。The meter should lay under the conditions of the package, a high degree of no more than 5 stacked layers.

## 八、产品质保及服务 Warranty and Service of Product

电表自出厂日起 18 个月内，如用户发现不符合上述特性及技术要求，且在由有关电力计量部门证明又完全按照本说明书中所规定的要求操作的情况下，我公司负责免费修理。The meter within 18 months after delivery , if the users do the operating complete following up the instruction, found the meters are not to conform to the above characteristics and technical requirements, and got the proved of relevant electric measurement departments. Our company will be responsible for free repair.

注：以上图片仅供参考，产品以实物为准，

Note: The above pictures are for reference only, the products are subject to the actual product,

版权所有，保留一切权利。内容如有改动，恕不另行通知。

Copyright, all rights reserved. Specification subject to change without prior notice.